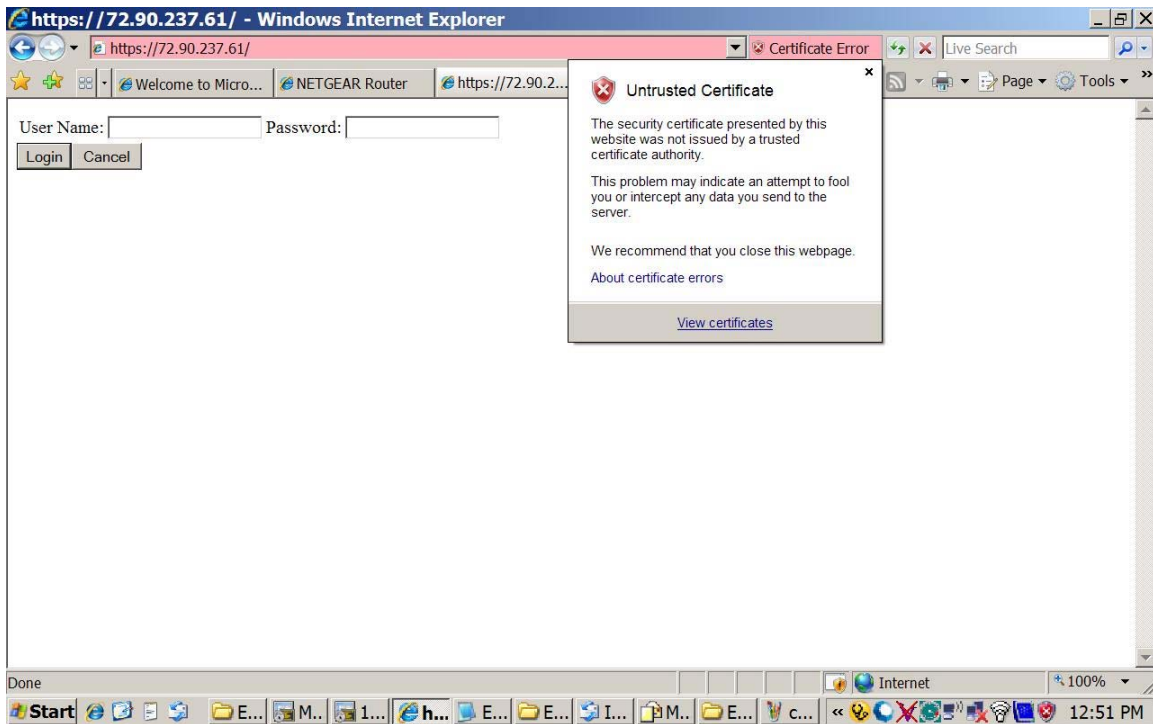
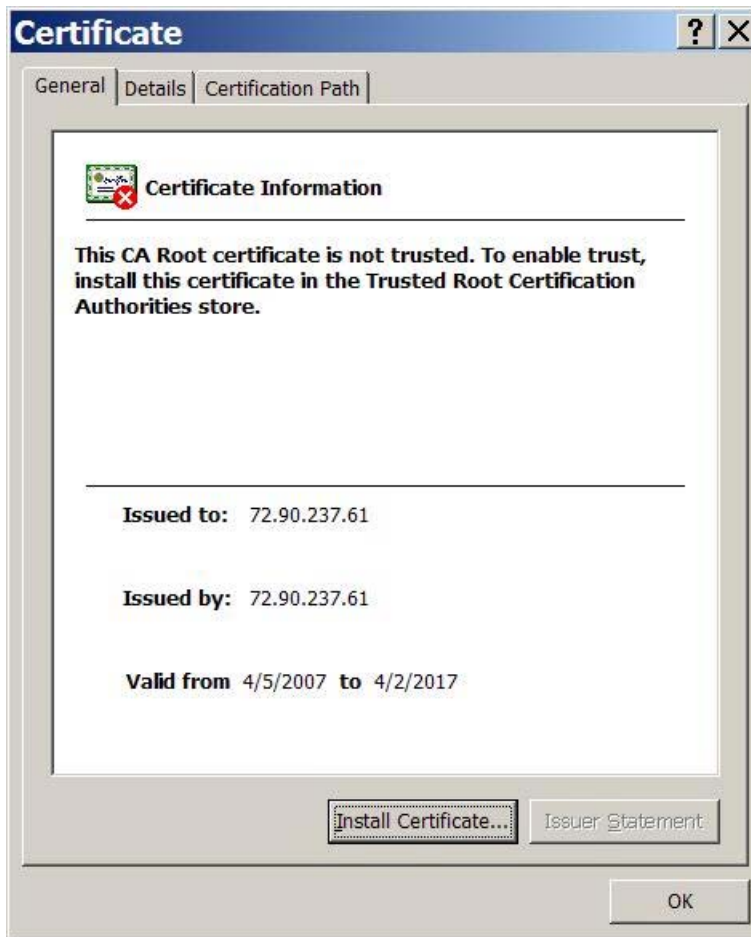


How to Install a “Root Certificate” for Windows Internet Explorer

Click on “Certificate Error”



Click on “View certificates”



Click on “Install Certificate”



Click on "Next"



Click "Browse"



Click “Trusted Root Certification Authorities”, Click “OK”



Click “Next”



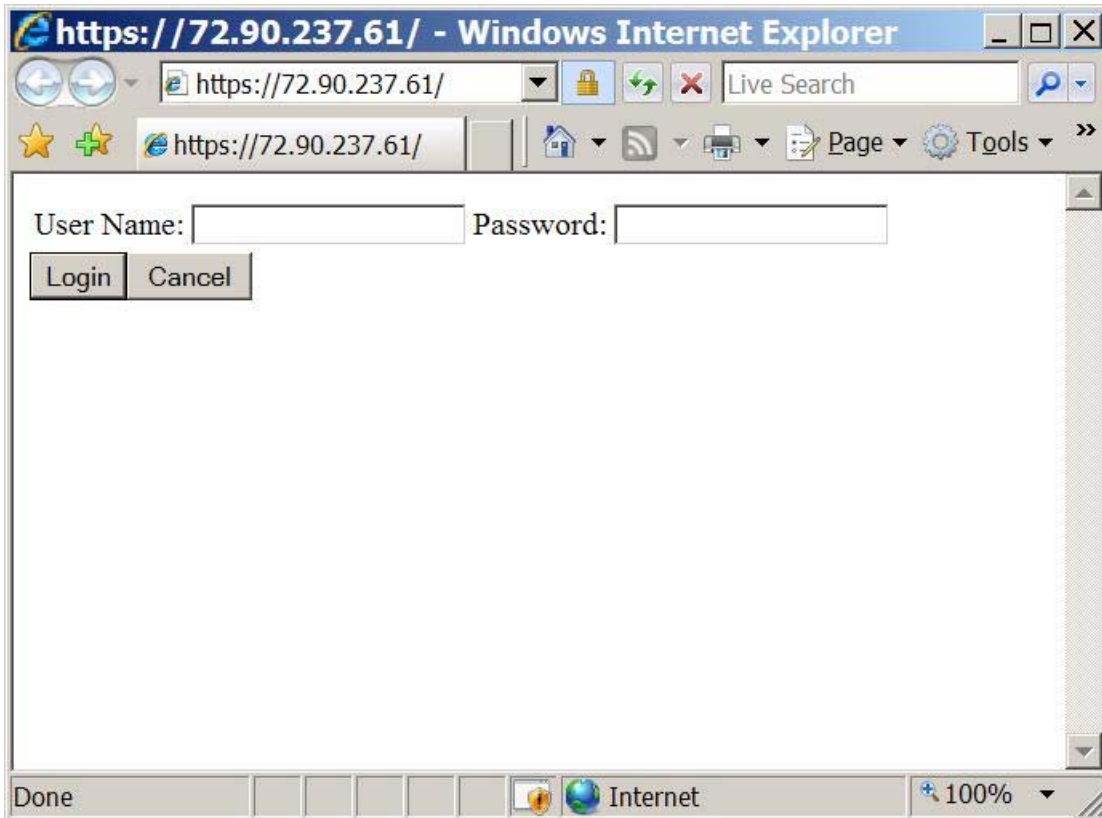
Click "Finish"



Click "Yes"



Click "OK"



The certificate is correctly installed if the lock with the blue background appears.